

OUTDOORS WEST

Summer 2016

The Official Publication of the Federation of Western Outdoor Clubs

Volume 38, No. 2

Coming Soon: FWOC's Fall Convention near Puget Sound in Washington State

Climate Change, Water Uncertainty and Resilience Through Conservation

IslandWood Educational Learning Center

Bainbridge Island near Seattle, WA • September 16–18, 2016

PRESIDENT'S INVITATION

It is with great enthusiasm that I invite all our members and friends to the 2016 FWOC Convention, September 16th to 18th at the IslandWood Educational Learning Center on Bainbridge Island in Washington State. The fee of \$150.00 includes very exceptional accommodations with a shower, bedding and linens.

Tucked into a backdrop of lush evergreens, this model of sustainable development utilizes 255 acres of natural grounds to provide educational programs about sustainable conservation and environmental practices for young and old. Check out links from our website homepage to learn more about IslandWood. An advantage of meeting there is experiencing firsthand their environmental education program and learning about their partnership with the University of Washington.

Shelley Spalding, Pacific Northwest Climate Action Liaison for the Great Old Broads for Wilderness, has planned a dynamic program of speakers, topics and entertainment starting Friday evening. Several informal gatherings will offer great opportunities to visit with old friends, meet new ones and to engage in conversations regarding subjects of great importance to you.

Central to our mission, FWOC Resolutions have played a significant role influencing the outcome of discussions and legislation related to the protection of clean air, water, global warming, wilderness protection and the privatization of public lands. Members are encouraged to use previously adopted resolutions, available on our website, or consider



*George Milne
FWOC President*

submitting new ones by September 1st for consideration at our fall convention. Send proposals or questions to Sydney Herbert, our resolution review committee chair, at psydnehy1@msn.com.

There will be time scheduled for you to report on your organization and its activities.

I'm looking forward to hosting you at IslandWood.



Ferry crossing Puget Sound to Bainbridge Island and Olympic Mountains

CONTENTS

President's Message	2
2016 Convention Information	3-4
Conservation News	5-6
Clubs in Action	6-8
In the Media	9
Membership Forms	10
2016 Convention Registration	11
Calendar	12



2016 MEMBER CLUBS

Angora Hiking Club, Astoria, OR
California Alpine Club, Mill Valley, CA
California State Park Ranger Association (CSPRA), Bowman, CA
Chemeketans, Salem, OR
Chinook Trail Association, Vancouver, WA
Contra Costa Hills Club, Oakland, CA
Friends of Nevada Wilderness, Reno, NV
Friends of Mt Hood, Clackamas, OR
Friends of the Columbia Gorge, Portland, OR
Great Old Broads for Wilderness, Durango, CO
Hobnailers, Spokane, WA
Idaho Environmental Council, Idaho Falls, ID
Indian Creek Botanical Mission, Selma, OR
Klahhane Club, Port Angeles, WA
Klamath-Siskiyou Wildlands Center, Williams, OR
Mazamas, Portland, OR
Montana Wilderness Association, Helena, MT
Mt. St. Helens Club, Longview, WA
Nature Friends, Mill Valley, CA
Obsidians, Eugene, OR
Olympians, Hoquiam, WA
Oregon Nordic Club, Portland, OR
Santiam Alpine Club, Salem, OR
Sierra Club, Angeles Chapter, Los Angeles, CA
Sierra Club, Kern-Kaweah Chapter, Bakersfield, CA
Sierra Club, Mother Lode Chapter, Sacramento, CA
Sierra Club, Oregon Chapter, Portland, OR
Sierra Club, Tehipite Chapter, Fresno, CA
Sierra Club, Toiyabe Chapter, Reno, NV
Siskiyou Audubon Society, Grants Pass, OR
Siskiyou Field Institute, Selma, OR
Skagit Alpine Club, Mount Vernon, WA
Southern Utah Wilderness Alliance, Salt Lake City, UT
Tamalpais Conservation Club, Mill Valley, CA
Trails Club of Oregon, Portland, OR
Washington Alpine Club, Seattle, WA
Whitman College Outdoor Program, Walla Walla, WA
Wilderness Watch, Missoula, MT
Winter Wildlands Alliance, Boise, Idaho

FEDERATION OF WESTERN OUTDOOR CLUBS

Established in 1932 for the Mutual Service and for the Promotion of the Proper Use, Enjoyment and Protection of America's Scenic Wilderness and Outdoor Recreation Resources

PRESIDENT'S MESSAGE

Members of FWOC continue to expend considerable time and energy in monitoring, evaluating, and responding to a great number of conservation and environmental concerns throughout the western states. At present there is much proposed legislation that would compromise the Wilderness Act along with previous protected lands in all the western states. One priority is joining with those working so diligently to gain protection for valued lands that have yet to be protected. FWOC members have been successful in influencing decisions that favor conservation and environmental legislation for over 84 years. It is our determination to continue that legacy left to us by so many dedicated individuals.

Another priority concerns oil and coal trains traveling throughout the United States. The recent train derailment in Mosier, Oregon resulting in fires, pollution and evacuation of many from their homes is a reminder that efforts to curtail such potentially dangerous oil trains must be continued. The Friends of the Columbia Gorge and the Sierra Club, Oregon Chapter have both been extremely effective getting people involved in efforts to protect Oregon and Washington from another potential accident.

Privatization of public lands is another challenge affecting everyone. When land is removed from Federal jurisdiction, the protection afforded those lands will no longer exist. Among many leading the efforts to prevent such a travesty are the Great Old Broads for Wilderness. They helped organize rallies in support of public lands in Washington, Oregon and Idaho in response to the occupation of the Malheur National Wildlife Refuge. Wilderness Watch has been active in discussions regarding grazing on public lands as well as defending wilderness areas from the growing efforts by mountain bike organizations to introduce legislation to allow such activity in Wilderness.

The National Parks and the US Forest Service are experiencing continued congressional reduction in their budgets, now less than 2% of the national budget. It is extremely difficult for both organizations to function as intended in maintaining facilities and lands. There are discussions currently under way to allow corporate sponsorship and advertising within the National Parks to supplement their inadequate budgets. Oh My!

OFFICERS

President: *George Milne*, 1864 SE Anspach St., Oak Grove, OR 97267, 503-572-8512, milnemasonry@frontier.com

Vice-President: *Jan Walker*, PO Box 129, Selma, OR 97538, spooky7@frontier.com

Secretary: *John Rettig*, 632 NW Aspen Avenue, Portland, OR 97210, johnbrettig@yahoo.com

Treasurer: *Sylvia Milne*, 1864 SE Anspach St., Oak Grove, OR 97267, sylviamilne@msn.com

Past-President: *Joan Zuber*, 44731 South Elk Prairie Road, Molalla, OR 97038, 503-829-8709, zuberj@juno.com

Washington, DC Representative: *Brock Evans*, 5449 33rd Street NW, Washington, DC 20015, 202-244-7138, bevans_esc2004@yahoo.com

FWOC's Conservation Policy Advisor: *J. Michael McCloskey*, 2829 SW Sunset Blvd., Portland, OR 97239, 503-892-2664, jmmccloskey@aol.com

STATE VICE PRESIDENTS

California: David Czamanske, Joe Fontaine, Ann Meneguzzi, Beryl Vonderheid

Montana: George Nickas

Nevada: Marge Sill

Oregon: Shirley Cameron

Washington: Raelene Gold, Marianne Scharping

OUTDOORS WEST

Editor: Raelene Gold

Layout Editor: Carol White

Contributing Editors: Sylvia Milne, Jan Walker, John Rettig, Sydney Herbert, Shelley Spaulding

The deadline for submissions for the Winter 2017 issue is Dec. 1, 2016.

Send to: raelene@seanet.com

Website:

www.federationofwesternoutdoorclubs.org



2016 FWOC CONVENTION PROGRAM

Climate Change, Water Uncertainty and Resilience Through Conservation

This year our FWOC Convention program takes up the issue of Climate Change and its impacts to our western lands and waters, and considers conservation actions for resilience to these impacts.

In 2015 the FWOC passed Resolution 3: A Call to Action to Minimize Climate Change Impacts – a bipartisan call to minimize climate change impacts by reducing fossil fuel extraction and transportation on public lands and prioritizing management of public lands to maximize carbon storage, biodiversity and ecosystem function.

The summers of 2015 and 2016 have highlighted the impending problems of higher temperatures, draught, water scarcity, catastrophic wildfire, dying forests and imperiled wildlife.

This year's Program Chair, **Shelley Spalding**, a delegate to last year's convention from the Great Old Broads for Wilderness, has put together an outstanding program. She will discuss *Public Lands and Climate Change* and show a video interview with Naomi Klein, author of the environmental blockbuster book, *This Changes Everything*.

Chuck Willer, who is with the Coast Range Association, will present a program on the important *Northwest Forest Plan: Its future and its social & political context*. A new effort at preserving Northwest old growth forests and their importance related to climate change will be the focus of **Stephen Sharnoff** and **Andy Kerr**'s presentation on a proposed Douglas Fir National Monument located in the Santiam River watershed in Oregon's central Cascades. **Raelene Gold** will give an update on the *Public Lands/Seizure Movement*.

Coming up from southern California, **David Czamanske**, from the Angeles Chapter of the Sierra Club, will talk about California's progress in addressing climate change through a cap and trade program and transitioning from fossil fuels to renewables. Also, he will describe how California is dealing with its longtime drought through the Governor's strict water restrictions.

Also coming from California is **Ann Meneguzzi** bringing the film *Over Troubled Waters*, a 45 minute documentary about the San Joaquin-Sacramento Rivers Delta, the largest estuary on the west coast, and problems it faces with detrimental alterations to its natural flows.

David Ortman, formerly with the Friends of the Earth and currently with the Sierra Club, has been working on the issue of storage dams as they are promoted to reduce the impacts of summer water scarcity for agricultural irrigators.

Kim Sager-Frandkin, a Wildlife Biologist with the Lower Elwha Klallam Tribe, will talk about the *Elwha River: Post-Dam Removal*, the largest dam removal project ever done in the U.S. The Elwha River is on the Olympic Peninsula and empties into the Strait of Juan de Fuca.

Saturday evening there will be a screening of acclaimed documentary on the Elwha, the *Return of the River* and discussion with director John Gussman.

Closing both Friday and Saturday evening will be folksinger **Dusty Rhodes** with original and traditional songs about the environment and social issues.

AFTER CONVENTION OPPORTUNITIES ON SUNDAY AT 1 PM FOR DOCENT-LED TOURS OF ISLANDWOOD

Potential tours include the following:

- **Art Walk**
- **Organic Garden and Greenhouse Explorations**
- **Sustainable Design** of the sustainable architecture features of LEED Gold certified campus
- **Themed Trail Walks**
 - Bird Habitat including the Bird Blind on cattail marsh, and Bog Treehouse
 - Forest Canopy Tower and Forest Hike

2016 FWOC CONVENTION PROGRAM

DRAFT CONVENTION SCHEDULE

Friday, September 16

- 1:00 **Executive Committee Meeting** (open to all attendees)
- 4:00 **Check in**
- 4:30 **Happy Hour**
- 6:00 **Dinner**
- 7:00 **Welcome and roll call:** George Milne, FWOC President
- 7:20 **Getting ready for Resolution adoption on Sunday:** Sydney Herbert
- 7:30 **IslandWood history, mission, and logistics:** IslandWood Staff
- 8:00 **Dusty Rhodes:** Folk and Irish music, including original and traditional songs about environmental and social issues ranging from climate change to over-population and civil rights

Saturday, September 17

- 7:30–8:30 **Breakfast**
- 9:00 **Welcome and schedule review:** Shelley Spalding, Program Chair
- 9:15 **Proposed Douglas Fir National Monument:** A template for 21st century national forest conservation and management, Stephen Sharnoff, Jepson Herbarium, UC Berkeley and the Missouri Botanical Garden and Andy Kerr, The Larch Company
- 10:10 **WILD CARE:** Public Lands and Climate Change, including video interview with Naomi Klein, Shelley Spalding, Great Old Broads for Wilderness
- 10:40 **Break**
- 10:55 **The Northwest Forest Plan:** Its future and its social and political context, Chuck Willer, Coast Range Association
- 11:45 **Update on the Public Lands Transfer/Seizure Movement:** Raelene Gold, FWOC
- 12:00 **Lunch**
- 1:00 **Over Troubled Waters:** This documentary examines the policies and decisions that led to the deterioration of California's Sacramento-San Joaquin Delta. It concludes with ideas about how California can move away from its historically high reliance on the Delta and toward greater water security through strategies for regional water self-sufficiency.
- 1:55 **California's role as a global environmental leader:** David Czamanske, Sierra Club, Angeles Chapter
- 2:15 **Break**
- 2:30 **Climate Change and Water Storage Models:** David Ortman, Sierra Club, Cascade Chapter
- 3:00 **Elwha River:** Post-Dam Removal – Kim Sager-Fradkin, Wildlife Biologist, Lower Elwha Klallam Tribe

- 3:35 **Using FWOC Resolutions to Strengthen Conservation Aims:** Sydney Herbert and John Rettig
- 4:00 **Club Reports**
- 4:30 **Happy Hour**
- 6:00 **Dinner**
- 7:10 **Screening of Return of the River** and discussion with director John Gussman
- 9:00–9:30 **More music and sing-along** with Dusty Rhodes, folksinger
- Sunday, September 18**
- 7:30–8:30 **Breakfast**
- 9:00 **Resolutions** (final review and voting)
- 10:00 **Annual meeting, elections of offices and other business**
- 12:00 **Convention adjourns**

FWOC RESOLUTIONS HOW TO WRITE A RESOLUTION *by Sydney Herbert*

First, go to the FWOC website and find out if any policies relate to your proposed resolution. Check to see if there are adopted resolutions which relate to it and examine for conflicts, and look for opportunities to combine with and strengthen existing resolutions.

Then, commence to write. As FWOC resolutions are not legal documents, you won't need a lot of "whereases." A very simple form will suffice:

Resolution Title: _____

Club or individual member submitting: _____

Contact email and/or phone: _____

Date: _____

Background of Issue: _____

(This section outlines the nature of the problem you are addressing)

Resolution: This takes the form of FWOC supports _____, or FWOC opposes _____.

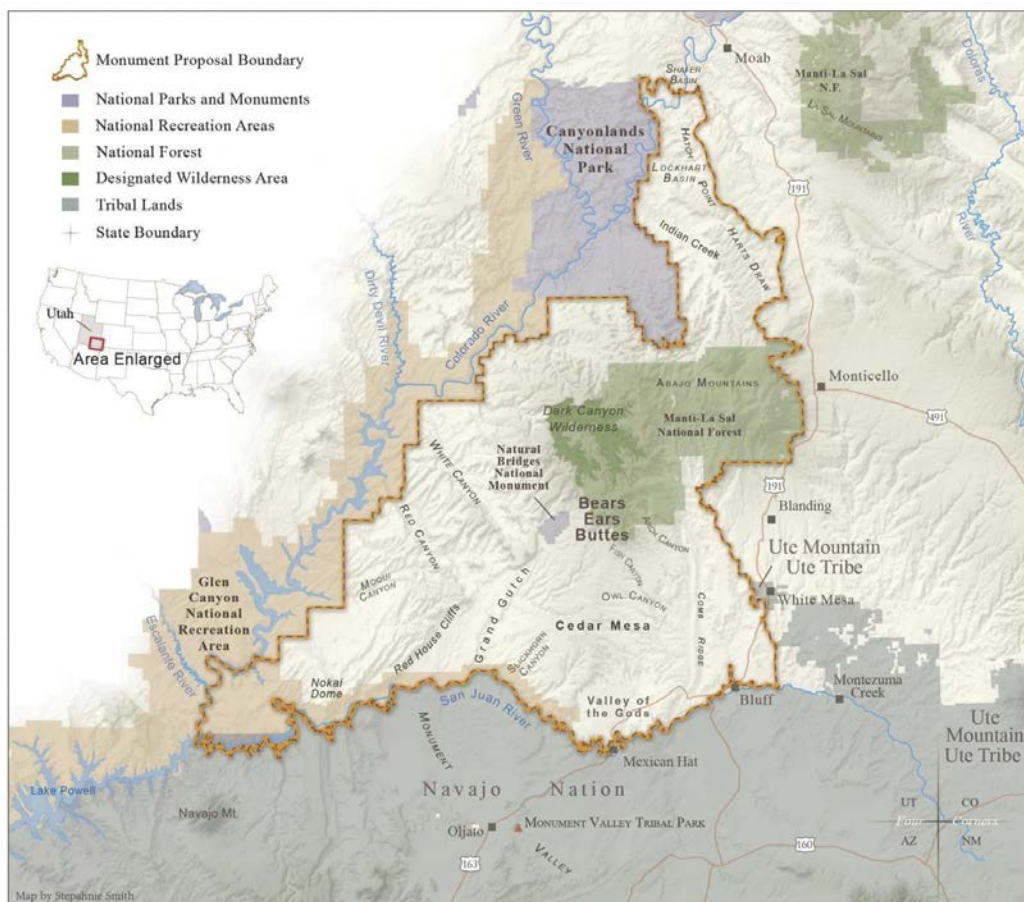
- I do urge you all to consider writing a resolution. Our programs and study are intended to produce ACTION and especially COALITIONS
- Please write your resolution in advance of the annual meeting and send it to me, which will allow duplication and distribution at the beginning of the meeting

Sydney Herbert
FWOC Resolution Committee Chair
psydnehy1@msn.com

THE BEARS EARS MONUMENT PROPOSAL GOES TO PRESIDENT OBAMA

The **Southern Utah Wilderness Alliance** continues its uphill battle to protect wilderness in Utah. Currently they are strongly supporting the 1.9 million-acre Bears Ears monument proposal that is led by the Bears Ears Inter-Tribal coalition. The Navajo, Ute Mountain and Uintah Ouray Ute, Paiute, Hopi and Zuni Tribes all have ancestral ties over millennia to this area in San Juan County, in the mountains and redrock canyons of southeastern Utah. The area contains an intact archaeological record of the presence of Native American civilizations there and is considered sacred to the tribes. It continues to be utilized for ceremonies, and hunting and gathering. Last October the Coalition formally delivered the proposal for the Bears Ears Monument to the Obama administration, also requesting collaborative management of the area between the Tribes and federal government.

The State of Utah, strongly opposes the president's use of the Antiquities Act to protect the region, which would restrict off-road vehicles, oil and gas drilling and development in a designated Bears Ears National Monument. Utah's Congressional Representatives Rob Bishop and Jason Chaffetz have introduced the Public Lands Initiative in Congress July 14th which fails to protect the Bears Ears, furthers the state of Utah's land grab and supports fossil fuel development. Both SUWA and the Inter-Tribal Coalition had originally tried to work with Representative Bishop on his bill, but that process failed. The Bears Ears National Monument proposal has rallied broad support and on July 16th Sally Jewell, Secretary of the Interior



hosted a public hearing in Bluff, Utah to which 1400 supporters turned out.

Source: Redrock Wilderness Summer 2016

Southern Utah Wilderness Alliance, www.suwa.org

CLIMATE KIDS WINNING IN COURT

Making headlines are the youngsters that have gone to court regarding climate change and are winning. In Washington State, a group of youths, ages 10 to 15, who with help of the Oregon non-profit, Our Children's Trust, petitioned the Washington State Department of Ecology to adopt stricter science-based regulations combating climate change. King County Superior Court Judge Hollis Hill ordered Ecology to promulgate a carbon emissions reduction rule by the end of 2016 and make recommendations to the state legislature on science-based greenhouse gas reductions in the 2017 legislative session. Judge Hill also ordered

CONSERVATION NEWS

Ecology to consult with the youth petitioners in advance of that recommendation. The kids were ably represented by Andrea Rogers of the Western Environmental Law Center.

Similar lawsuits seeking more aggressive action on climate change have gone forward in other states. In Oregon, a judge allowed a lawsuit against the federal government on behalf of 21 teenagers and children, also helped by Our Children's Trust, to go forward. These lawsuits utilize the Public Trust Doctrine, which has been part of American jurisprudence since the founding of the country and provides that a government holds essential natural resources "in trust" for present and future generations. For updated information go to: www.ourchildrenstrust.org.

KEEPING MOUNTAIN BIKES OUT OF WILDERNESS

Wilderness Watch is opposing a Congressional Bill to Allow Bikes and Other Machines in Wilderness! Utah Republican Senators Mike Lee and Orrin Hatch have introduced a bill, "The Human-Powered Travel in Wilderness Areas Act," that would open Wilderness to mountain bikes and other machines for the first time ever. The bill was instigated by the Sustainable Trails Coalition, one of the most anti-Wilderness organizations to form in recent years.

For more than 50 years, the Wilderness Act has protected Wilderness areas designated by Congress from machines of all types. This has meant, as Congress intended, that Wilderness has been kept free from cars, trucks, ATVs, snowmobiles, bicycles, and all other types of vehicles and machines. This bill is an assault on the very idea of Wilderness and the values of the Wilderness Act. Please urge your Senators to oppose this bill.

This past spring, Wilderness Watch spearheaded a letter to Congress signed by 115 organizations from across the country which are opposed to allowing bicycles and other machines in Wilderness. Mountain bikes are exactly the kind of mechanical devices and mechanical transport that Congress intended to keep out of Wilderness in passing the Wilderness Act. Bikes have their place, but that place is not in Wilderness. At a time when wilderness and wildlife are under increasing pressures from increasing

populations, growing mechanization, and a rapidly changing climate, the last thing Wilderness needs is to be invaded by bicycles and other machines. The 1964 Wilderness Act currently bans mechanized transportation in more than 100 million acres, seeking to preserve lands in their "untrammelled" state while maintaining a primitive experience for visitors. For more information and to take action go to www.wildernesswatch.org.

CARBON TAX INITIATIVE (INITIATIVE I-732) ON NOVEMBER BALLOT IN WASHINGTON STATE

Carbon Washington, a grass roots group led by Ph.D. Economist and stand up comic Yorum Bauman, has managed to get its Carbon Tax Initiative (I-732) on the November ballot in Washington State. Similar to the British Columbia Carbon Tax, it would tax the largest carbon emitters and use the proceeds to lower the state sales tax, business taxes and expand a tax credit for low income families. Though billed as "revenue neutral," that was contested by the State Department of Revenue which calculated it would cause a deficit. The measure has been highly controversial especially within the Seattle environmental community. Another group, the Alliance for Jobs and Clean Energy, led by Climate Solutions and the Washington Environmental Coalition, had been also working on an Initiative, a cap and trade measure that would raise money for social and environmental justice efforts. An effort to bring the two proposals together failed. In spite of putting together a vast group of supporters, the Alliance never got an agreement on how the revenue should be spent and failed to come out with an alternative initiative. Most major environmental groups decided to either oppose or take no position on I-732. But in April the ranks were broken by Audubon Washington whose Board decided they would back the only measure on the table, citing the urgency of the issue and stating "the number one threat to birds is climate change. . . . Climate change is a threat to birds and people, and a carbon tax is a proven solution to reduce greenhouse gases."

For updated information and how you can help see: www.yeson732.org.



CLUBS IN ACTION

Compiled by Raelene Gold



Member clubs and organizations are invited to send news of their activities to be included in the next *Outdoors West* by April 30, 2016 to raelene@seanet.com

CALIFORNIA

California member clubs are taking part in the 100th anniversary of the National Park Service this year. The **California State Parks Rangers Association** (CSPRA) is having its 2016 Retiree's Rendezvous and annual membership meeting on October 4th to 7th, 2016 at Morro Bay State Park. Attendees will visit the Morro Bay Natural History Museum, go on a guided hike to Morro Rock and enjoy their traditional Retiree's "Road Kill Grill" potluck. Can't wait to hear what was on that grill! CSPRA has a special relationship with National Park Service (NPS) rangers in Yosemite Valley because in 1864 Abraham Lincoln first gave Yosemite Valley and the Mariposa Grove to the state of California, to be held as a park for the people forever. On April 23rd there was a grand celebration of Galen Clark being appointed the first ever park "Guardian" in 1866. Yosemite became a national park in 1890. Both NPS and CSPRA consider him their own.

MONTANA

Wilderness Watch, joined by Western Watersheds Project, has just won a significant victory for the six Wildernesses in the Owyhee region in Idaho. The victory came in the settlement of an appeal of the Bureau of Land Management's (BLM's) Owyhee Canyonlands Wilderness and Wild and Scenic Rivers Management Plan. The appeal challenged decisions approving commercial trapping, unattended hunting blinds, and virtually unlimited motor vehicle use by ranchers.

The six separate Wildernesses are the Owyhee River Wilderness, North Fork Owyhee Wilderness, Pole Creek Wilderness, Big Jacks Creek Wilderness, Little Jacks Creek Wilderness, and the Bruneau-Jarbridge Rivers Wilderness. Congress designated these six Wildernesses in 2009 as part of the Omnibus Public Lands Management Act. Altogether they total over 516,000 acres of Wilderness. BLM manages all six areas together under a new wilderness management plan. But several aspects of the wilderness management plan violated the 1964 Wilderness Act and the National Environmental Policy Act. They challenged these violations with the Interior Board of Land Appeals (IBLA), and BLM decided to reach a settlement which included: a ban on commercial trapping, curtailment of motor vehicles for ranchers and the outlawing of hunting blinds in Wilderness.

OREGON

Summer Outings lasting up to a month were a tradition for the founding member clubs of the Federation. Three Oregon member clubs are continuing this tradition. Others work to continue the tradition of working diligently on conservation issues.

The **Chemeketans** in Salem, Oregon had a great summer outing May 29th to June 4th starting with a base camp in Canyon de Chelly in Arizona. They hiked the canyon, explored Anasazi cliff dwellings and shared a potluck with an extended Navaho family.



Trails Club of Oregon planned two outings for this summer. June 24th to 26th was a weekend outing at the Belknap Hot Springs Resort on the Mackenzie River, that has two mineral springs swimming pools and acres of landscaped gardens and trails. July 10th to 15th they are headed to Olympic National Park, staying at Naturebridge on Crescent Lake. Hikes are planned to Hurricane Ridge and the Sol Duc areas. These longer summer outings are a long tradition for early members of the Federation, and TCO invites members of FWOC member clubs to join in if there is room. For more information see www.trailsclub.org.



The **Obsidians** are another member club that continues the summer outing tradition they call Summer Camp. On July 30th to August 5th, eighty-five members headed to Camp Robertson in the Ruby Mountains of Nevada. See www.obsidians.org.



Friends of the Columbia Gorge based in Portland has long been a leader in protecting the Columbia Gorge National Scenic Area from the threat of unsafe coal and oil trains traveling on both sides of the Columbia River through the Gorge. They had warned that "communities face rising chances of a catastrophe." As predicted, on June 3rd, disaster did strike when a Union Pacific train with 96 oil tankers filled with flammable Bakken oil had a derailment of 16 cars near Mosier, Oregon in the Gorge. One car was on fire, oil



CLUBS IN ACTION

Compiled by Raelene Gold



soaked into the soil, the city drinking water supply was polluted and an oil sheen was on the Columbia River. Friends of the Columbia Gorge is a member of the Stand Up to Oil coalition which called for a ban on further oil trains through the area until there is an investigation of the cause of the derailment.



The **Klamath-Siskiyou Wildlands Center** joined numerous other conservation organizations in sending a letter of opposition to the BLM's new management plan for Oregon forests, though the plan included some measures they have supported for some time. The proposed plans would increase the timber harvest more than a third over present levels, to 278 million board-feet, by returning to more aggressive logging on a smaller portion of forest. Simultaneously, they boost the amount of land protected in reserves from 66 percent to 75 percent, pulling in most (though not all) of the remaining mature and old-growth forests technically left unprotected by the Northwest Forest Plan. The plans would also end salvage logging of burned trees inside reserves – a provision environmentalists have long fought for. For more information go to www.kswild.org.



The **Indian Creek Botanical Mission** in Selma, Oregon is supporting its member Deer Creek Valley Natural Resources Conservation Association's BLM Plan proposal. The proposal is for a Natural Selection Alternative (NSA) to the BLM's Western Resource Management Plan Revision's Final Environmental Impact Statement (EIS). The EIS will

determine how these public lands will be managed for the next 20 years. The NSA was developed by Orville Camp to implement ecoforestry practices on public lands and was the first community alternative to be included in an Environmental Assessment and Decision for implementation in the Medford district BLM (South Deer Project 2005). The NSA has large public support from community organizations and citizens from all walks of life. The NSA also got the support of Dennis Odion, Ph.D., at the University of California, Santa Barbara, who commented "The Natural Selection Alternative would retain and restore late successional forest ecosystems, which have the lowest fire hazard conditions, but also have the greatest value for old-growth associated wildlife." For more information contact Mary and Orville Camp, maryc@rogueriver.net.



Friends of Mount Hood's (FOMH) mission is to monitor development and management of national forest lands on Mount Hood, protecting the alpine meadows, wetlands, streams, wildlife and forested slopes of the mountain. FOMH was founded in 1988 in response to a proposed condominium development for Stringer Meadows at the Mount Hood Meadows ski permit area. The late Kate McCarthy photographed and presented slide shows on the environmental damage from proposed expansion projects by Mount Hood Meadows. Her presentations were persuasive, so that she was able to gather fervent supporters to oppose further projects on the mountain.

WASHINGTON

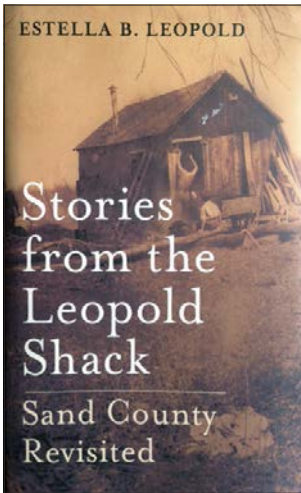
Members of the Washington Broadband of the **Great Old Broads for Wilderness** headed to Bumping Lake June 11th to 13th, where an old growth forest next to the William O. Douglas Wilderness is slated to be cut and inundated for a proposed new storage dam that will enlarge the Bumping Lake Reservoir. This is a part of the \$4 Billion Yakima Basin Integrated Plan that aims to increase water supply for irrigators with junior water rights during drought years. After hiking the area, Broads wrote letters to their congressional representatives urging protection for the old growth forest, which is also critical habitat for the Northern Spotted Owl. Joining the group was Judy Niebauer who works for the Fish and Wildlife Service on the endangered bull trout; the cool waters of Bumping Lake tributaries are important spawning habitat for the bull trout.



Washington Alpine Club's longtime President, Mike Mahaney, announced that this is his last year serving as President after 14 years. Under Mike's leadership the club has completed the renaissance of their Guye Cabin, doubled their membership to 465, strengthened their classes and solidified their financial health. The Federation also gives thanks to Mike for hosting a number of our Annual Conventions at Guye Cabin at Snoquamie Pass. Remember Guye Cabin is available for rental for group events, retreats or by individuals. See www.washingtonalpineclub.org, go to the calendar month you are interested in.

IN THE MEDIA

by Raelene Gold



Book Review: *Stories from the Leopold Shack: Sand County Revisited*, by Estella B. Leopold, Oxford University Press, 2016

Stories from the Leopold Shack is the perfect companion and complement for Aldo Leopold's beloved environmental classic *Sand County Almanac* published in 1949. During the midst of the great depression

when many homesteader families suffered without hope through drought, duststorms and farm failures, Aldo in 1934 purchased 80 acres of exhausted farmland in the sand hills on the Wisconsin River. Leopold had a vision of restoring the land to its historical pine forests, wildflower meadows, prairies and wetlands. The story of making that vision real is a nostalgic reminder of those times of hard physical work, self-sufficiency, frugality, families working together and neighborly helpfulness.

Each weekend the Leopold family left their Madison home and headed for the Shack for a weekend of restoration work, research and fun. Estella, the youngest, and last remaining of Aldo's five children, was eight at the time and recalls in meticulous detail all that transpired. There is the initial construction of the Shack from a dilapidated chicken coop, followed by the fireplace and the outhouse. Then the planting of thousands of pine seedlings, two years of failures of the pines, then the retrieval and planting of the native wildflowers, and then the native prairie grasses. Under Aldo's tutelage the young Leopolds also diligently record the dates of the first blooming of the wildflowers and arrivals of migratory birds in the Shack journal. Each day he questions them about what they did and saw. There is much to be learned here about how children develop an understanding and relationship to the land, and a commitment to its preservation. It is also the touching story of a father and daughter relationship that nurtures a budding scientist into a lifelong inquiry into an understanding of the

evolution and interrelationships of the natural world. For young Estella it is all just great fun

Soon a maturing Estella also finds the sweetness of solitude in nature by claiming a small Island in the nearby slough as her own special hideaway. By herself she builds a bridge of willows to the island. Only to find that spring flood waters traveling the slough collapse her bridge, the fate of a rookie bridge builder. She discovers that to be out alone in nature is to be oneself and it is a chance to develop a sense of community with the land and develop ethical values.

Accompanying Estella's narrative, are the black and white archival photographs taken by Estella's older brother Carl that movingly capture those times.

As her older siblings left to embark on their own lives, Estella was the one who remained with her parents resulting in many reminiscences. She lovingly captures the essential role of her mother, for whom she was named. Her mother's Hispanic heritage contribute music, vibrancy and richness to the Leopold's family life. Aldo's sudden death in 1948 from a heart attack while helping with a neighbor's brush fire interrupts this idyllic life with tragedy. But like deep-rooted prairie plants after a wild-fire's cataclysmic disturbance, the Leopolds vigorously rebound to continue their father's legacy of conservation and land ethics. All five of the Leopold children have had distinguished careers in the natural sciences: Starker in wildlife ecology, Luna in hydrology, Carl in botany, Nina in conservation and Estella as a Paleobotanist and Conservationist. They all joined together to enlarge the original Shack property and establish the Leopold Memorial Foundation, a thriving environmental learning center in Wisconsin. But most poignant is that each of the Leopold children found and established their own "Shack," a piece of land to continue the land practices developed at the Shack. A central Leopold teaching was that it necessary to know the history of the land and its interrelating parts to restore, protect and have an ethical relationship with that land. This book richly illuminates the path to that end.

For more information about the Aldo Leopold Foundation and its programs, go to www.aldoleopold.org.

FWOC MEMBERSHIP FORMS

2016 ANNUAL DUES NOTICE – MEMBER CLUBS & ORGANIZATIONS

1. Member Club/ Organization: _____
2. Billing Information: Contact Name: _____
Address: Number & Street/P.O. Box _____
City, State, Zip Code _____
Email: _____ Phone: (____) _____ - _____
3. Number of current members in your organization: _____
4. Use the following schedule to determine your organization's dues payment:
Clubs & Organizations with membership, base remittance on the number of members:
1-300 members = \$25.00 301-1,000 members = \$50.00 1,000 members = \$100.00
Non-member organizations, base remittance on your budget:
\$5,000 or less = \$10.00 \$5,000-\$50,000 = \$25.00 \$50,000 = \$50.00
Make your check payable to FWOC Amount enclosed _____
5. Please enclose a check with your completed renewal update or application and mail to:
FWOC & Associates, Sylvia Milne, Treasurer 1864 SE Anspach St., Oak Grove, OR 97267-2619
Questions? Email: sylviamilne@msn.com

CONSERVATION CONTACT

Name: _____
Address: _____
Email: _____ Phone: (____) _____ - _____

FWOC EMAIL ALERTS: by default you will be included in our general communication on alerts, communication and the convention. **TO BE EXCLUDED, please check the box.**

OUTDOORS WEST NEWSLETTER: by default it will be available on our website for you to read or download. **TO RECEIVE PRINTED VERSIONS, please check the box.**

2016 ANNUAL DUES NOTICE – INDIVIDUAL & HOUSEHOLD

Member Name: _____
Email: _____ Phone: (____) _____ - _____
Signature: _____ Date: _____

Member Name: _____
Email: _____ Phone: (____) _____ - _____
Signature: _____ Date: _____

Address: Number & Street/P.O. Box _____
City, State, Zip Code _____

Organization Affiliation (if applicable): _____

FWOC EMAIL ALERTS: by default you will be included in our general communication on alerts, communication and the convention. **TO BE EXCLUDED, please check the box.**

OUTDOORS WEST NEWSLETTER: by default it will be available on our website for you to read or download. **TO RECEIVE PRINTED VERSIONS, please check the box.**

Individual Dues: Regular = \$15.00 Supporting = \$25.00 Household = \$20.00
Contributing = \$50.00 Low Income = \$5.00 More = \$
Make your check payable to FWOC Amount enclosed _____

Please enclose a check with your completed renewal update or application and mail to:
FWOC & Associates, Sylvia Milne, Treasurer 1864 SE Anspach St., Oak Grove, OR 97267-2619

For more information, email: sylviamilne@msn.com

2016 CONVENTION REGISTRATION FORM

Federation of Western Outdoor Clubs 84th Annual Convention

Climate Change, Water Uncertainty and Resilience Through Conservation

September 16–18, 2016

Name _____ Male Female

Club or Organization: _____ Delegate? Yes No

Address: _____

City: _____ State: _____ Zip: _____

Phone: _____ Cell: _____ Email: _____

No elevators, please check if unable to use stairs:

Full Conference:

All meals Fri.–Sun., overnight accommodations, lodging included \$150.00 _____

Late fee for registrations received after Aug. 15 \$ 25.00 _____

College Student:

The Federation of Western Outdoor Clubs is offering member clubs the opportunity to send at no cost, two college students with a passion for conservation. The FWOC will cover full annual convention registration, including lodging and meals.

College Student (Name) _____ No Cost

FWOC 2016 Annual Dues:

Individual Membership (if not submitted in 2016) \$15.00 _____

Family Membership \$25.00 _____

TOTAL ENCLOSED: \$ _____

Please make check payable to FWOC and send with Registration Form to:

Sylvia Milne, Treasurer
1864 SE Anspach St.
Oak Grove, OR 97265-2619

NO REGISTRATIONS WILL BE ACCEPTED AFTER SEPTEMBER 9

The IslandWood Center requires a duplicate registration form be submitted to them. If possible, please do so online at https://islandwood.tfaforms.net/296141?tfa_Id=70134000000VL34&

Transportation and Driving Directions to the 2016 Convention

- There are several transportation options from SEA TAC Airport to the Seattle/Bainbridge Ferry Terminal including metro buses, light rail, taxis, town cars and shuttle vans.
- Ferry to IslandWood – Once on board the ferry, call one of the following taxi phone numbers to reserve a taxi.
From IslandWood to ferry – Call at least 45 minutes prior to the scheduled departure time of the ferry you wish to catch – the taxi will meet you at the Welcome Shelter in our parking lot approximately 20 minutes before the ferry departure time.
- FERRY SCHEDULE AND INFORMATION: <http://www.wsdot.com/ferries/schedule/ScheduleDetailByRoute.aspx?route=sea-bi>
- DRIVING DIRECTIONS: <http://islandwood.org/about/directions>
- Taxi & Tours 206-842-7660 • Viking taxi 360-244-4420



FEDERATION OF WESTERN OUTDOOR CLUBS

Buel's Impressions Printing
1864 SE Anspach St.
Milwaukie, OR 97267

CHANGE SERVICE REQUESTED

CALENDAR



Walking path at IslandWood

September 16–18, 2016

FWOC Annual Convention:
*Climate Change, Water Uncertainty
and Resilience Through Conservation,*
IslandWood, Bainbridge
Island, WA. More info at: [www.
federationofwesternoutdoorclubs.org](http://www.federationofwesternoutdoorclubs.org)

November 8, 2016

National Election Day – VOTE
Watch the presidential debates on
September 26th and October 9th and
19th and the vice-presidential debate
on October 4th.